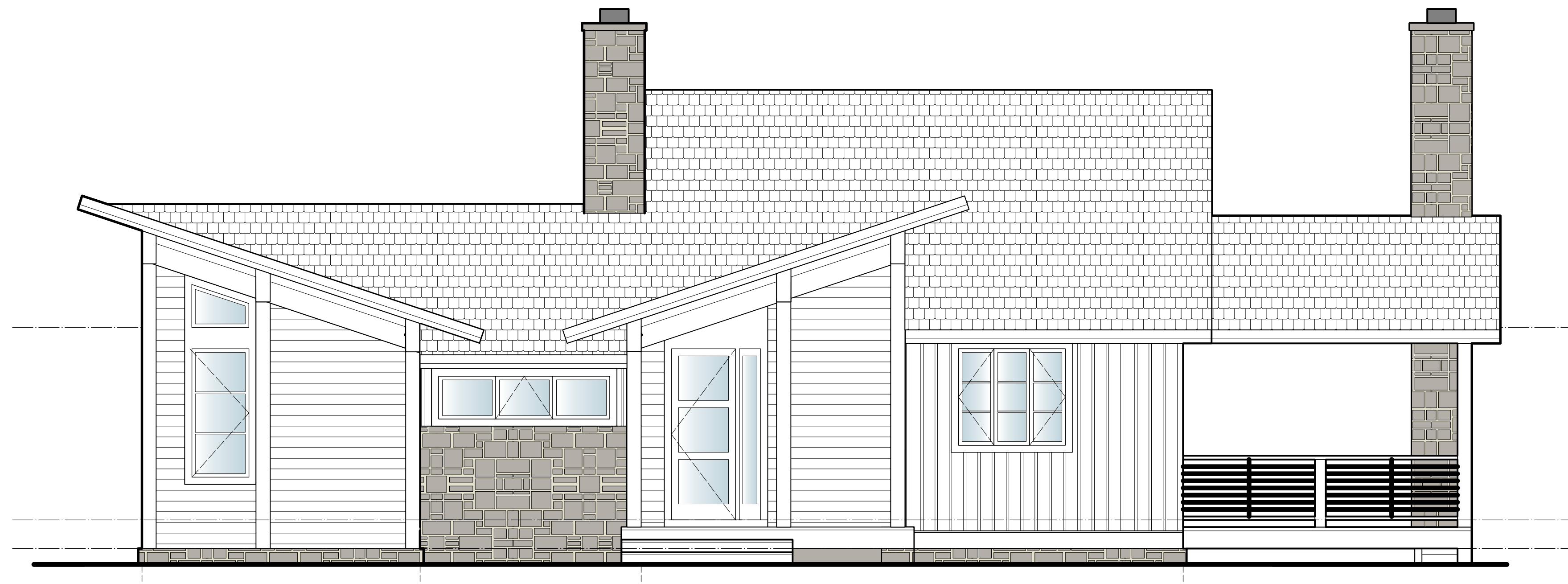


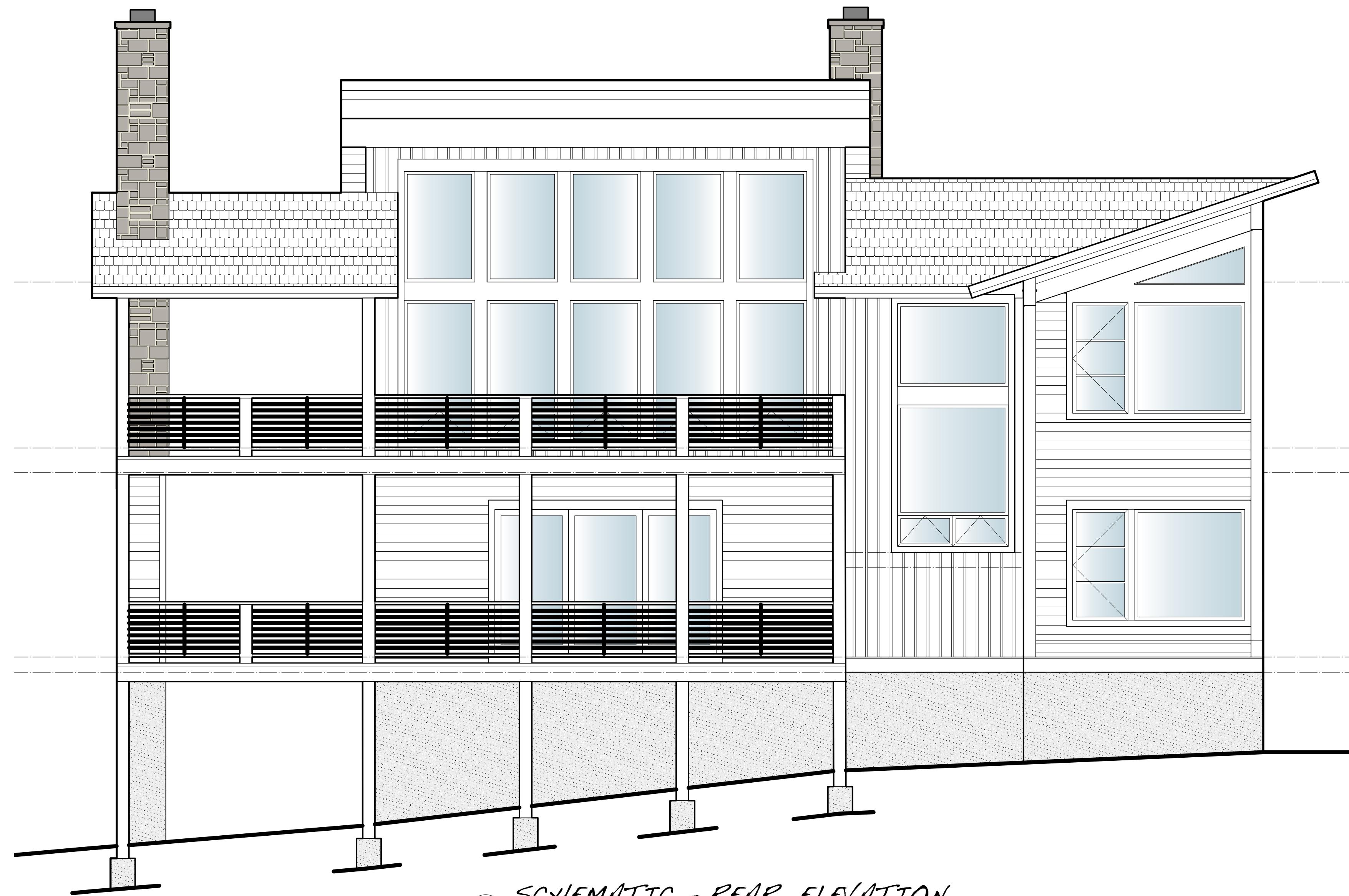


**GENERAL NOTES**

- 1) These drawings are property of the designer and may not be copied without the designer's written consent.
- 2) These drawings represent limited scope instruments and as such it is the responsibility of the licensed general contractor to coordinate and construct the represented project in compliance with all applicable national, state and local codes. The contractor and his subcontractors are to comply with all neighborhood or development covenants.
- 3) The general contractor is to verify any and all conditions in question prior to commencing construction.
- 4) All structural information to be supplied by a licensed structural engineer.
- 5) Exact size and reinforcement of all concrete footings must be determined by local soil conditions and acceptable practices of quality construction.
- 6) Owner and general contractor shall call out all specified items in contract form to properly qualify any and all finishes and materials agreed upon.



1 SCHEMATIC - FRONT ELEVATION

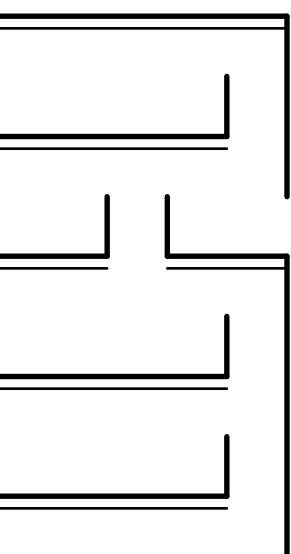


2 SCHEMATIC - REAR ELEVATION

project:  
yadkin point - lot 2  
blue ridge mountain club  
boone, nc

WHJ DESIGN, INC  
www.hutchjohnson.com  
5102 durham - chapel hill blvd  
durham, north carolina 27707  
e-mail: hutch@hutchjohnson.com

designed by:  
**HUTCH JOHNSON**  
post office box 52015  
durham, north carolina 27717  
919-810-6029



drawn by: WHJ  
checked by: WHJ  
date: 08/29/17 SD  
revisions:

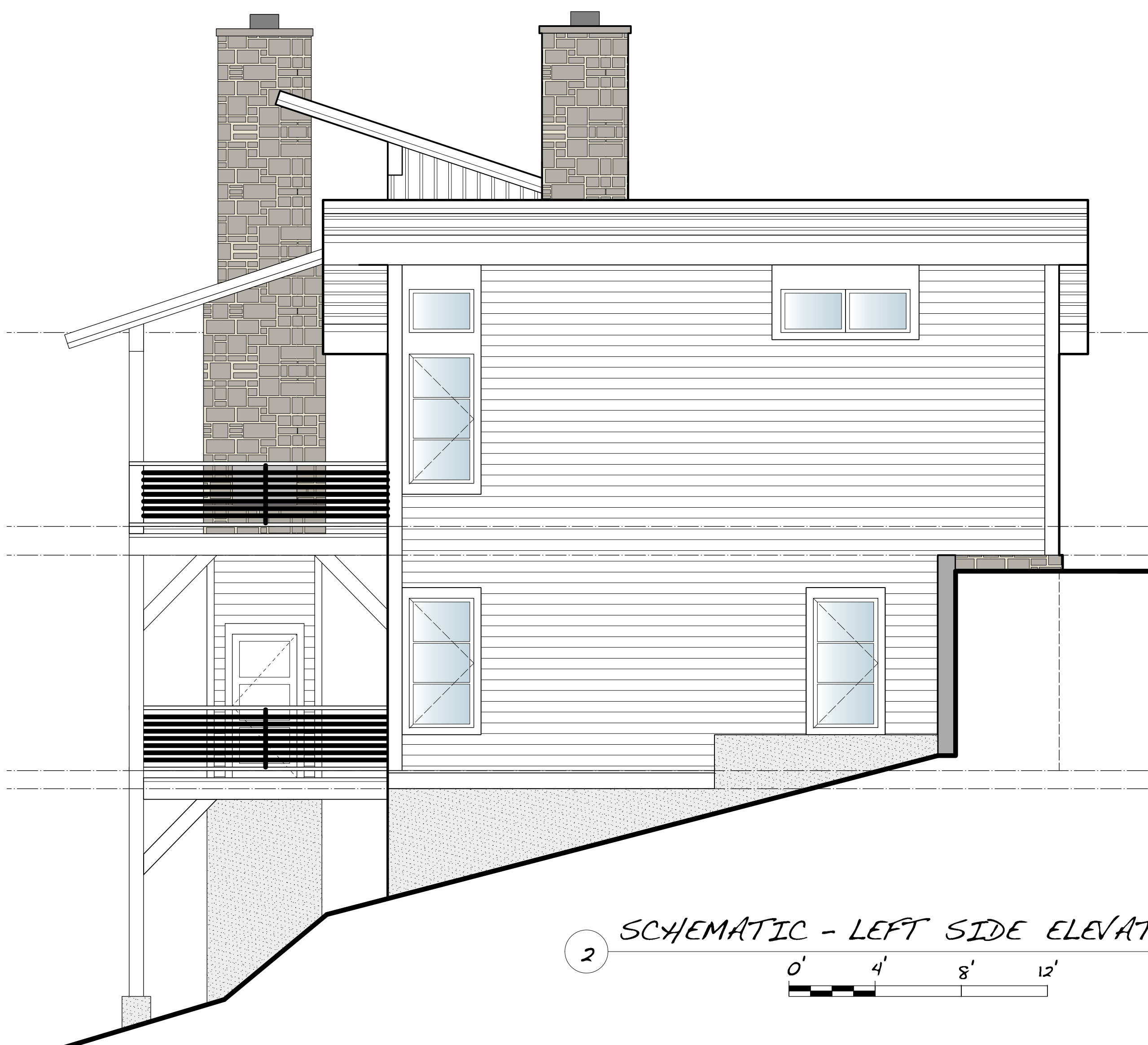


**GENERAL NOTES**

- 1) These drawings are property of the designer and may not be copied without the designer's written consent.
- 2) These drawings represent limited scope instruments and as such it is the responsibility of the licensed general contractor to coordinate and construct the represented project in compliance with all applicable national, state and local codes. The contractor and his subcontractors are to comply with all neighborhood or development covenants.
- 3) The general contractor is to verify any and all conditions in question prior to commencing construction.
- 4) All structural information to be supplied by a licensed structural engineer.
- 5) Exact size and reinforcement of all concrete footings must be determined by local soil conditions and acceptable practices of quality construction.
- 6) Owner and general contractor shall call out all specified items in contract form to properly qualify any and all finishes and materials agreed upon.



1 SCHEMATIC - RIGHT SIDE ELEVATION



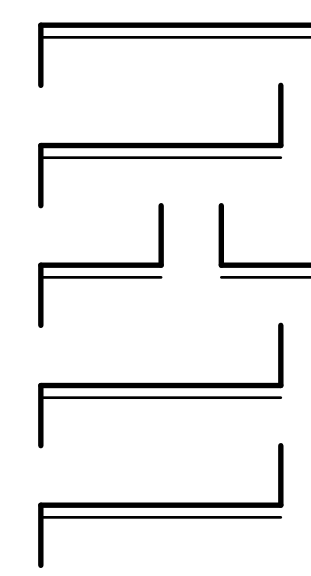
2 SCHEMATIC - LEFT SIDE ELEVATION



project:  
yadkin point - lot 2  
blue ridge mountain club  
boone, nc

WHJ DESIGN, INC  
webpage: www.hutchjohnson.com  
5102 durham - chapel hill blvd  
durham, north carolina 27707  
e-mail: hutch@hutchjohnson.com

designed by:  
**HUTCH JOHNSON**  
post office box 52015  
durham, north carolina 27717  
919-810-6029

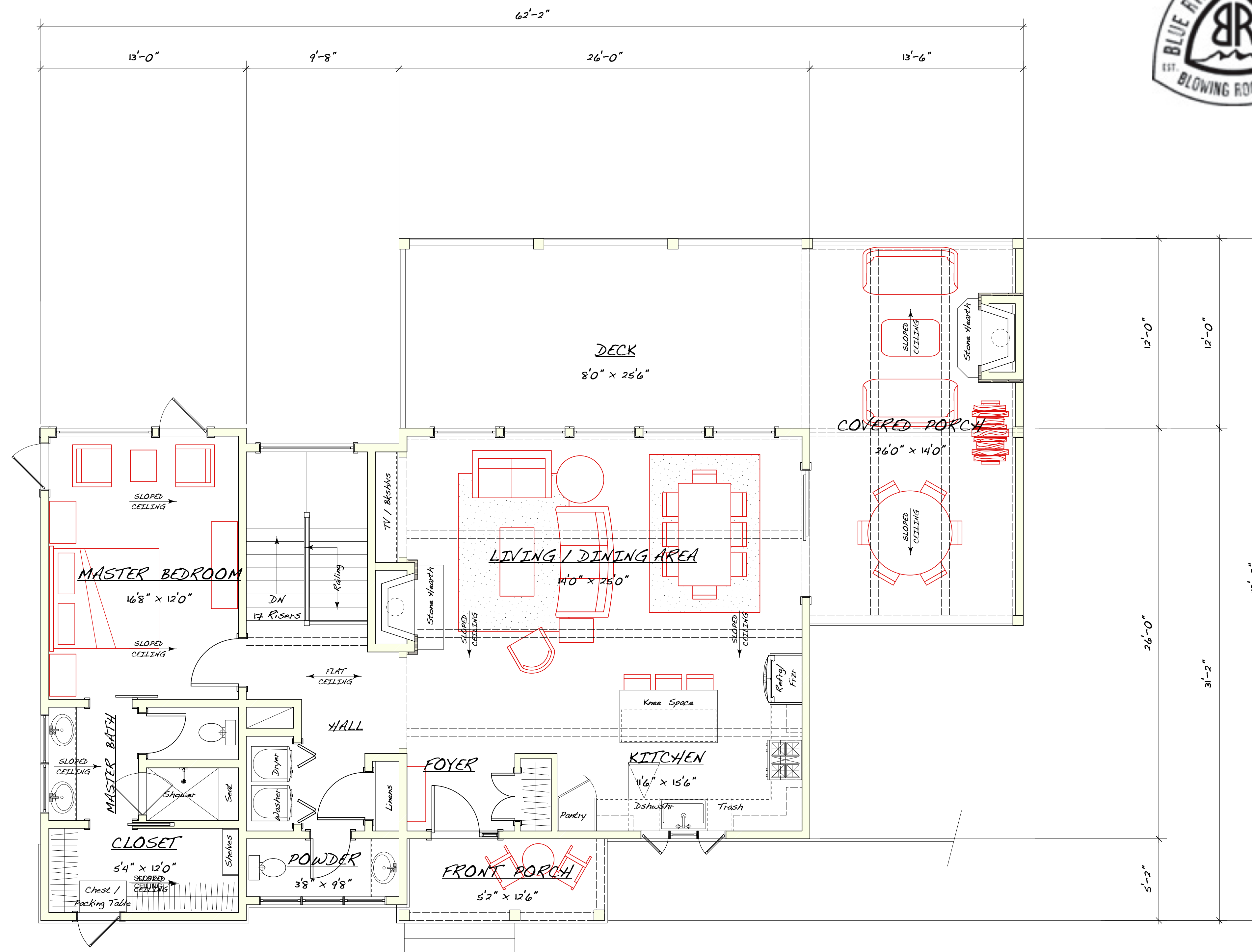


drawn by: WHJ  
checked by: WHJ  
date: 08/29/17 SD  
revisions:

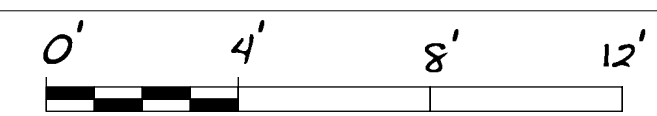


**GENERAL NOTES**

- 1) These drawings are property of the designer and may not be copied without the designer's written consent.
- 2) These drawings represent limited scope instruments and as such it is the responsibility of the licensed general contractor to coordinate and construct the represented project in compliance with all applicable national, state and local codes. The contractor and his subcontractors are to comply with all neighborhood or development covenants.
- 3) The general contractor is to verify any and all conditions in question prior to commencing construction.
- 4) All structural information to be supplied by a licensed structural engineer.
- 5) Exact size and reinforcement of all concrete footings must be determined by local soil conditions and acceptable practices of quality construction.
- 6) Owner and general contractor shall call out all specified items in contract form to properly qualify any and all finishes and materials agreed upon.



1 SCHEMATIC - FIRST FLOOR PLAN "A"



**SQUARE FOOTAGE CALCULATIONS**

Living Space	1365 htd square feet
Front Porch	70 square feet
Covered Porch	337 square feet

project:

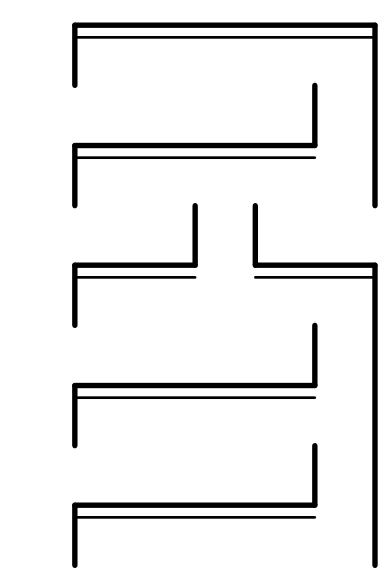
yadkin point - lot 2  
blue ridge mountain club  
boone, nc

designed by:

WHJ DESIGN, INC  
www.hutchjohnson.com  
5102 durham - chapel hill Blvd  
durham, north carolina 27707  
e-mail: hutch@hutchjohnson.com

**HUTCH JOHNSON**

post office box 52015  
durham, north carolina 27717  
919-810-6029



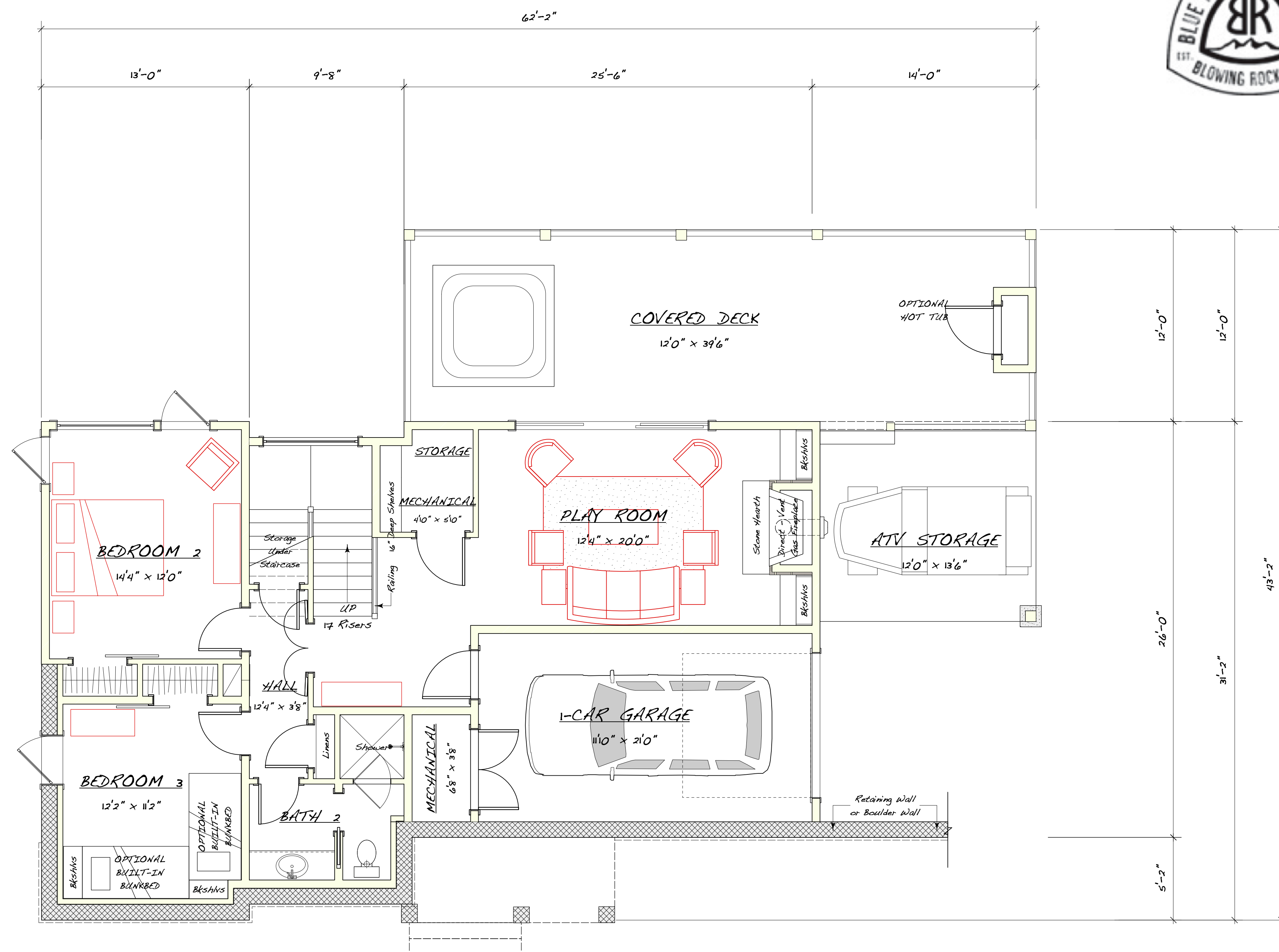
drawn by: WHJ  
checked by: WHJ  
date: 08/29/17 SD  
revisions:

sheet:  
**SD-3**  
of 4

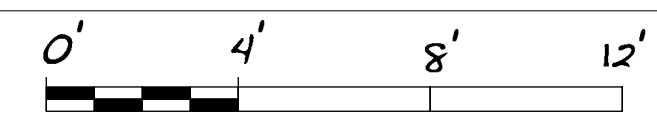


**GENERAL NOTES**

- 1) These drawings are property of the designer and may not be copied without the designer's written consent.
- 2) These drawings represent limited scope instruments and as such it is the responsibility of the licensed general contractor to coordinate and construct the represented project in compliance with all applicable national, state and local codes. The contractor and his subcontractors are to comply with all neighborhood or development covenants.
- 3) The general contractor is to verify any and all conditions in question prior to commencing construction.
- 4) All structural information to be supplied by a licensed structural engineer.
- 5) Exact size and reinforcement of all concrete footings must be determined by local soil conditions and acceptable practices of quality construction.
- 6) Owner and general contractor shall call out all specified items in contract form to properly qualify any and all finishes and materials agreed upon.



1 SCHEMATIC - LOWER LEVEL FLOOR PLAN "A"



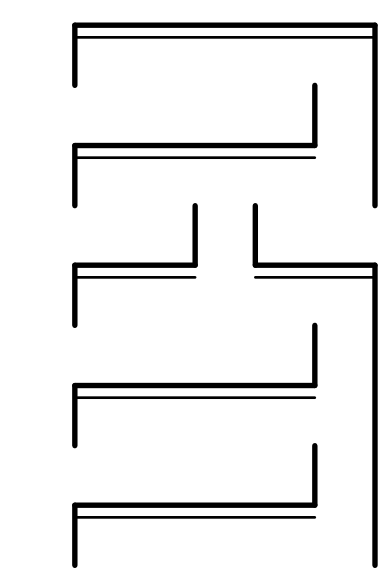
**SQUARE FOOTAGE CALCULATIONS**

Living Space	1060 htd square feet
1-Car Garage & Storage	304 square feet
Lower Deck	481 square feet

project:  
yadkin point - lot 2  
blue ridge mountain club  
boone, nc

designed by:  
**HUTCH JOHNSON**  
post office box 52015  
durham, north carolina 27717  
919-810-6029

designed by:  
**HUTCH JOHNSON**  
webpage: www.hutchjohnson.com  
5102 durham - chapel hill blvd  
durham, north carolina 27707  
e-mail: hutch@hutchjohnson.com



drawn by: WHJ  
checked by: WHJ  
date: 08/29/17 SD  
revisions: