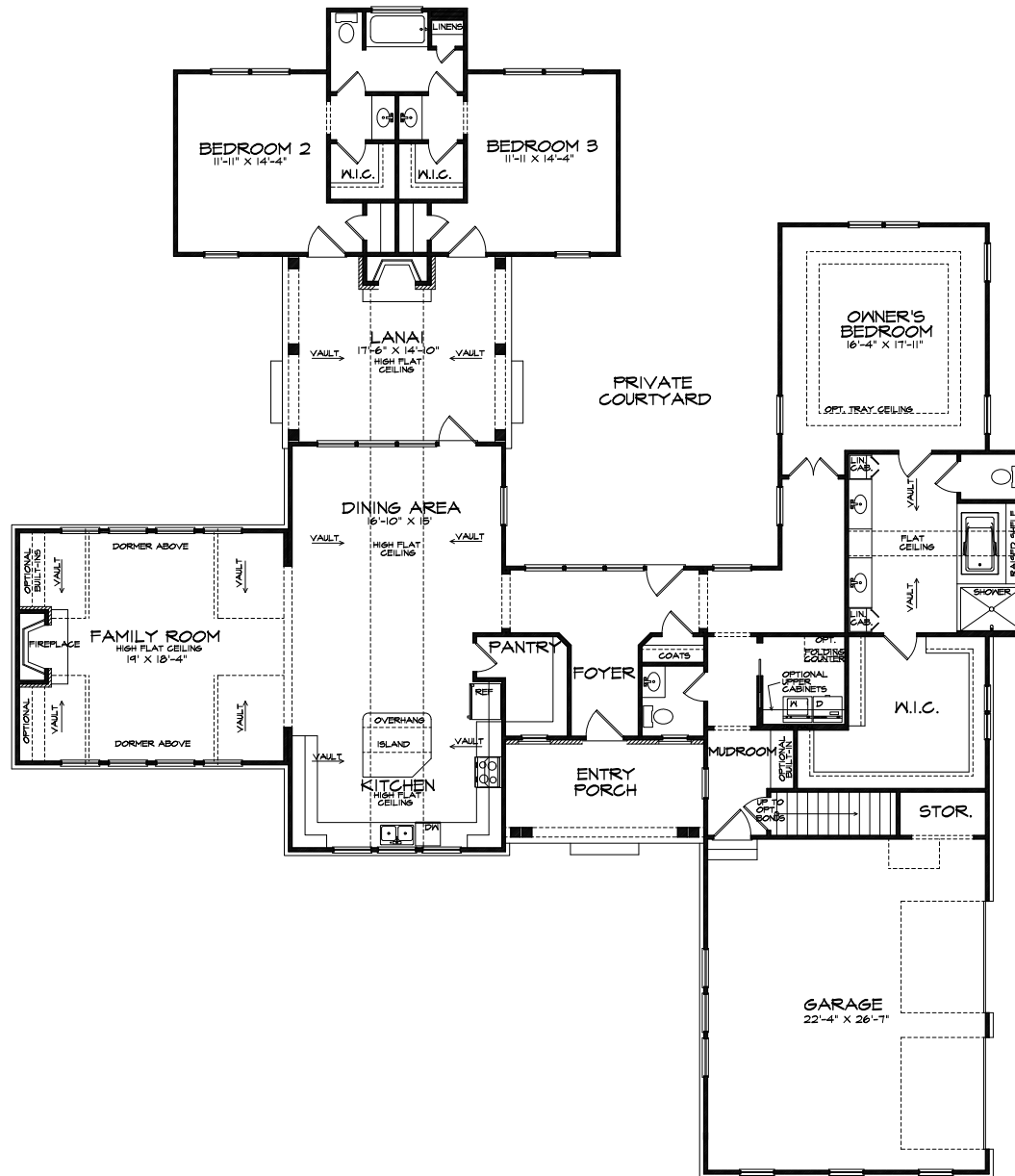




# TMLS - 2811 Main level plan



MAIN LEVEL	2214 S.F.
BEDROOM WING	597 S.F.
TOTAL HEATED	2811 S.F.
OPTIONAL BONUS	523 S.F.
TOTAL WIDTH	81' - 6"
TOTAL DEPTH	94' - 0"



# TMLS - 2811 Upper level plan

